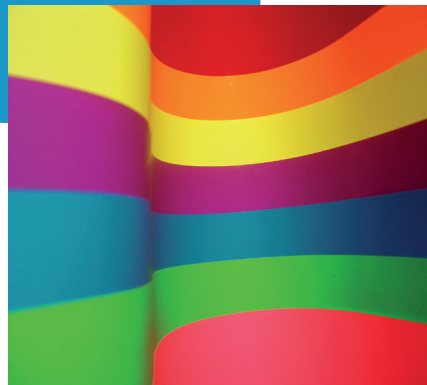


# Understanding Goals

IN PATH was initiated in October, 2011 with a duration of 2 years. The project is a Grundtvig initiative, funded by the European Commission as part of the Lifelong Learning Programme.

IN PATH envisages the development of a set of tools (handbook and training course) with innovative approaches for adults trainers and social work professionals, to promote the adjustment of their pedagogical techniques to the learning styles and intelligence of disadvantaged and marginalised citizens involved in training contexts.



# Partnership



**Sociedade Portuguesa de Inovação**

Mette Christensen

E-mail: mettechristensen@spi.pt

URL: <http://www.spi.pt>



**University of Pitești**

Georgeta Chirlesan

E-mail: g.chirlesan@gie.ro

URL: <http://upit.ro>



**The language Company LTD Traiding as Pilgrims**

Jim Wright

E-mail: jim@pilgrims.co.uk

URL: <http://www.pilgrims.co.uk>



**XXI Inveslan, S.L.**

Jaione Santos

E-mail: j.santos@inveslan.com

URL: <http://www.inveslan.com>



**University of Macerata**

Paola Nicolini

E-mail: nicolini@unimc.it

URL: <http://www.unimc.it>



**EAPN Portugal I Rede Portuguesa Anti-Pobreza**

Sandra Araújo

E-mail: sandra.araujo@eapn.pt

URL: <http://www.eapn.pt>



**Institute for Innovation in Learning**

**University of Erlang Nuremberg**

Amrei Tenckhoff

E-mail: amrei.tenckhoff@fim.uni-erlangen.de

URL: <http://www.fim.uni-erlangen.de>



**ASSOCIATED PARTNER:**

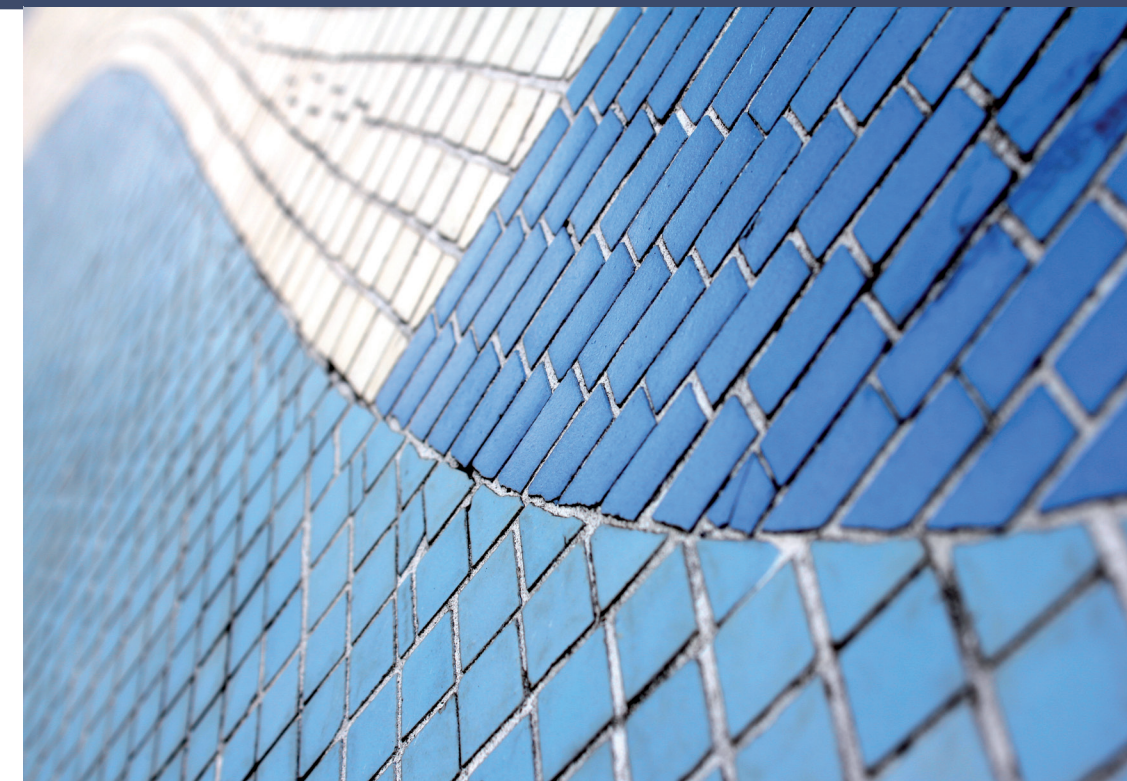
**Liga Portuguesa de Profilaxia Social**

Edite Silva

E-mail: intervencao@lpps.pt

URL: <http://www.lpps.pt>

Please visit our project website for more information at: [www.spi.pt/inpath](http://www.spi.pt/inpath) , and follow us on: [www.facebook.com/InPath.Project](https://www.facebook.com/InPath.Project) 



 **InPath**  
Intelligent Pathways for Better Inclusion

The IN PATH project is an initiative started in October, 2011, aiming to break the pattern of transferring poverty and exclusion from one generation to the next, by empowering marginalised and disadvantaged citizens to easily manage everyday problems in different areas and not to held back by their background.

517976-LLP-1-2011-GRUNDTVIG-GMP I This project has been funded with support from the European Commission. This publication [communication] reflects the views only of the author, and the Commission cannot be held responsible for any use which may be made of the information contained therein.

# Products

# Target Group

# Events

## Needs Analysis Report

This document describes the most recent theory and developments within the area of Multiple Intelligence Theory both at the European and international level. The report also analyses the results from all the countries within the consortium obtained through questionnaires and interviews applied to representatives of the target group (adult trainers and social work professionals) and experts of Mutiple Intelligence Theory.

## Practical Handbook

This is a set of tools, examples, strategies and good practices for adult trainers and social work professionals facilitating their work with socially disadvantaged groups by using Multiple Intelligence to implement four key areas: Financial Management Skills; Active Skills for Employment and Entrepreneurship; Parentings Skills; Learning to Learn Skills.

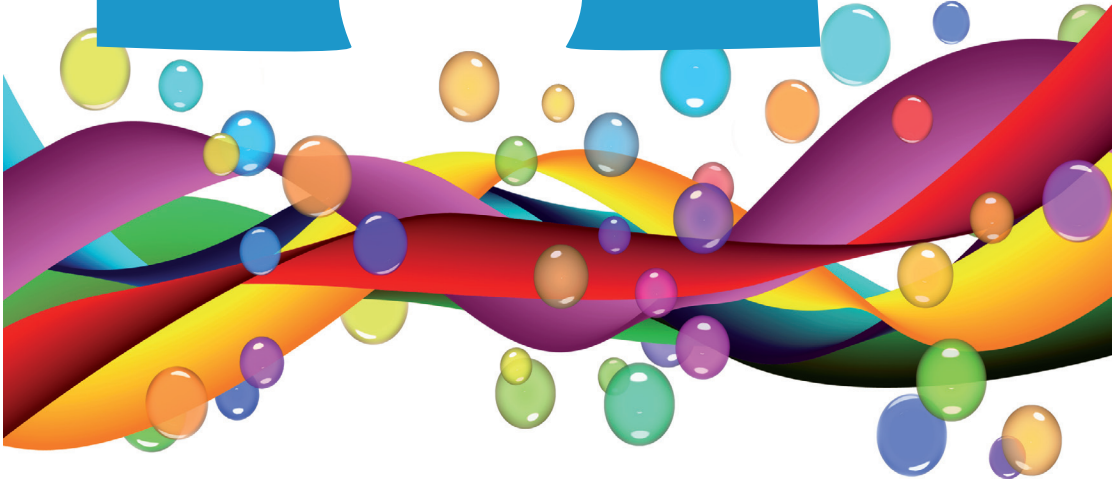
## Multimedia Presentation

Consists of a promotion tool that will be produced in digital format, aiming at promoting the project results (especially the final version of the handbook) with an innovative and appealing approach.

## DVD

This product will contain all the main products and results from the entire cycle of the IN PATH project available to all interested adult trainers and social work professionals.

The target group of the IN PATH project includes adult trainers, social workers and other professionals engaged with disadvantaged and marginalised citizens. The beneficiaries are disadvantaged and marginalised citizens including their families.



## International Event

IN PATH participated in the conference “Social Work, Social Developmente 2012: Action and Impact”. The event was held from 9-12 July 2012 and was the meeting point for policymarkers, social workers, scholars and students to exchange experience and development in social work practice, social research and education and social policy.

## National Validation Workshops

The aim of the workshops is to test and validate the pilot verson of the Handbook “New Pathways - Easy Answers for Hard Problems” and more specifically to assess which strategies and approaches can be more effective and useful for adult trainers and social work professionals to deal with underprivileged individuals in fostering the development of Financial Management Skills, Active Skills for Employment and Entrepreneurship, Parenting Skills and Learning to Learn Skills using the background information of Multiple Intelligence Theory.

## Grundtvig In-Service Training Course

At the end of the project an European namely the Grundtvig in-service training course “Innovative Tools for Inclusion” will be implemented in United Kingdom, offering adult trainers and social work professionals from all over Europe, the possibility of benefitting from the project’s results. This will include the results from the needs analysis, the national validation workshops and the final version of the Handbook.

## Final Seminars

Will be implemented in each partner’s country and will facilitate the important issues that IN PATH raises, such as social inclusion, new approaches to learning and tools for the professionals working with disadvantaged individuals. The final version of the handbook will also be available for the participants.